

SIFTU-M Ultra high Temperature Industrial Thermal Imaging Camera

Fixed Focus. 24x7 Temperature Monitoring Camera

SIFTU-M Ultra High temperature Camera's sole purpose is to **operate under High temperature, Indoor or Outdoor** environment, provides accurate results & early fire prevention with the help of **alarm warning system** which can be set accordingly.

The SIFTU-M provides **384 x 288** Thermal resolution for temperature measurement range **upto 1500°C** for distances at **0.5meters~1.5 meters. 40 mK** high resolution, to display temperature variations with an **89.3°** wide FOV for wider measurement range.

Typically, SIFTU requires customization with an air cooled or water cooled enclosure for use in high temperature environments.

The SIFTU-M Industrial Thermal Camera is a powerful tool for the following applications : **Metallurgy - Blast furnaces processes , Laser welding, Iron & Steel smelting, Blast furnace monitoring, Molten iron tank monitoring, Sintering monitoring, Material level monitoring, Kiln Monitoring.**

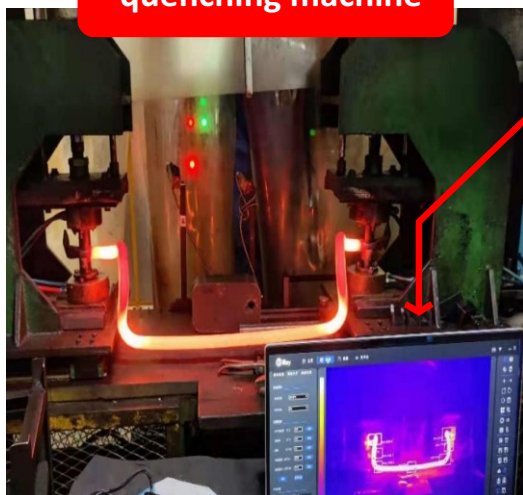


- Customised enclosure
- Tripod Support
- Temp range 0°~+1500°
- Software Processing + Reports
- Customised Alarm warning mode



Use in portable format with tripod or configure with air or water cooled enclosed fixed design effectively protect the lens & camera body

Hollow-pipe quenching machine



SIFTU in Use for Quality Control Application.

Hollow-pipe Quenching Machine uses high-frequency currents to heat up the surface of workpieces, temperature are raised to 1000°C in the heat treatment process which need to be measured.

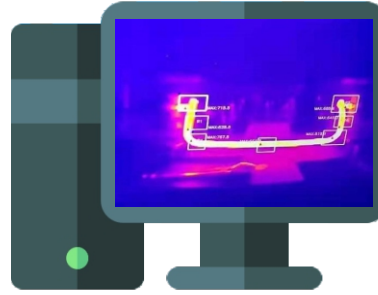
The camera will pinpoint even the most minute variations in temperature to ensure that any fault during the manufacturing process can be pinpointed, during the manufacturing itself.

SIFTU-M Ultra high Temperature Industrial Thermal Imaging Camera

Fixed Focus. 24x7 Temperature Monitoring Camera



ONVIF is an open industry forum for interoperability of IP based physical security products allowing cameras to communicate with network recording devices or with each other.



ATU Special cable provides Power & real time data monitoring

Specifications :

Model	SIFTU-M
Detector type	VOx, Uncooled FPA detector
Detector resolution	384 x 288
Spectral band	8~14μm
Pixel size	17μm
Thermal sensivity (NETD)	<50mk (optional 40mk)
FOV	Depending on lens configured
Frame rate	50Hz
Focusing mode	Fixed focus lens
Measurement range	0°C~+1500°C
Measurement accuracy	±2°C or ±2%,the larger value shall prevail
Measurement resolution	±2°C or ±2%
Color palettes	18
Temperature measurement tools	Fixed/centre, highest lowest temperatures, line & area monitoring
Image viewing modes	Thermal imaging, DDE
Video format	H264/265, Mp4 & Mov
External connectivity	External (NVR*)
Connectivity protocols	ONVIF, RTSP, MODBUS TCP
LAN protocols	TCP, UDP, RTSP, HTTP, SMTP, DHCP, PPPOE
Network interface	RJ45
Internal interface	1 x RJ45, 1 x DC, 1 x Alarm input, 1 x Alarm output, 1 x RS485
Online viewing	Web management interface
Alarm mode	I/O Output
Alarm output	I/O output, log, save image, file sending (FTP), email (SMTP), notification
Power supply	12 ~ 36VDC/≤3W
Operating storage temperature	-20°C~60°C/ -40°C~70°C
Ingress protection	IP54 or customised
Dimension & weight	46.5mmx48mmx148mm/314g+/-5g



Tripod Support



Easy Installation



Ultra High Temperature Monitoring



Equipped with professional temperature measurement and analysis software as well as rich measurement tools.